



STORMER



BOATS AT WORK

WWW.STORMERMARINE.NL

WE ARE STORMER. AND WE ARE READY TO BUILD THE BOAT THAT WILL WORK FOR YOU.

Stormer Marine is a young Dutch shipyard that builds workboats for discerning professional clients worldwide. We at Stormer combine the Dutch shipbuilding craft with the latest technologies in marine design, engineering, build and propulsion.

We deliver workboats to authorities, contractors, harbour officials and rescue organisations from Scandinavia to Africa. Applications include patrol, rescue, pollution control, fire-fighting, surveillance, contracting, towing and transportation services.

ALUMINIUM WORKS FOR US

We build our boats to last. We use seawater-resistant aluminium because it is rugged, lightweight and maintenance free. Aluminium is a sustainable building material and can do without expensive and vulnerable coatings. All parts are digitally cut for a perfect fit and finish.

In design and construction, we can easily implement client-specific modifications.

WWW.STORMERMARINE.NL

Porter Series



Patrol Series



Tug Series



Tug Cabin Series



Rescue Series



Harbour Series



TAILOR-MADE WORKBOATS

We build your boat for your specific application. Fast passenger transport requires a different design than heavy towing. That's why we build boats in different categories, such as our Tug, Patrol, Rescue, Porter and RIB series. We listen to your requirements and then engineer and build your boat to measure. For you and with you.

BUILT FOR THE JOB

Do you need a fast boat or a or tough tug? Do you carry lots of people or a lot of cargo? You tell us. For the propulsion you can choose for outboard, stern, shaft or jetdrive. Motorisation options are gasoline, diesel, electric or hybrid. The helm can be up front, at the center or at the rear and the dive doors at the sides. Push bows, bollards, winches, pumps and equipment; all will be installed to your specifications. The possibilities are endless. We can also deliver your boat trailerable or even transposable in a container.

STORMER QUALITY

Work boats should work. Always. Just think of our fire-fighting and rescue boats and you know why. We therefore insist on using the best quality parts. All technical components come from renowned suppliers such as Yanmar, Steyr, Honda Marine, Weber Jet and Vetus. This will guarantee trouble-free operation and little maintenance. We give special attention to the electrical system, a prerequisite on aluminium vessels.

STORMER

BOATS
AT
WORK



THE STORMER DETAILS THAT SET US APART.

You name it, we frame it. Stormer supplies the best equipment and clever technical solutions.



WWW.STORMERMARINE.NL

STORMER

BOATS
AT
WORK





THE BOATS THAT WORK FOR OUR CLIENTS.

A brief reference of some of the boats we delivered to our clients worldwide.



FN Diving Rotterdam



Monaco Port Authority



Oil spill recovery service, Angola



Port Authority



Port Authority Cition



Fire Brigade Deventer



Lighthouse Island Service Amsterdam



Kieldrecht Oil Transport



Fire Brigade Olst-Wijhe



Utrecht community



Zuid Holland landscape Authority

STORMER

BOATS
AT
WORK

WWW.STORMERMARINE.NL



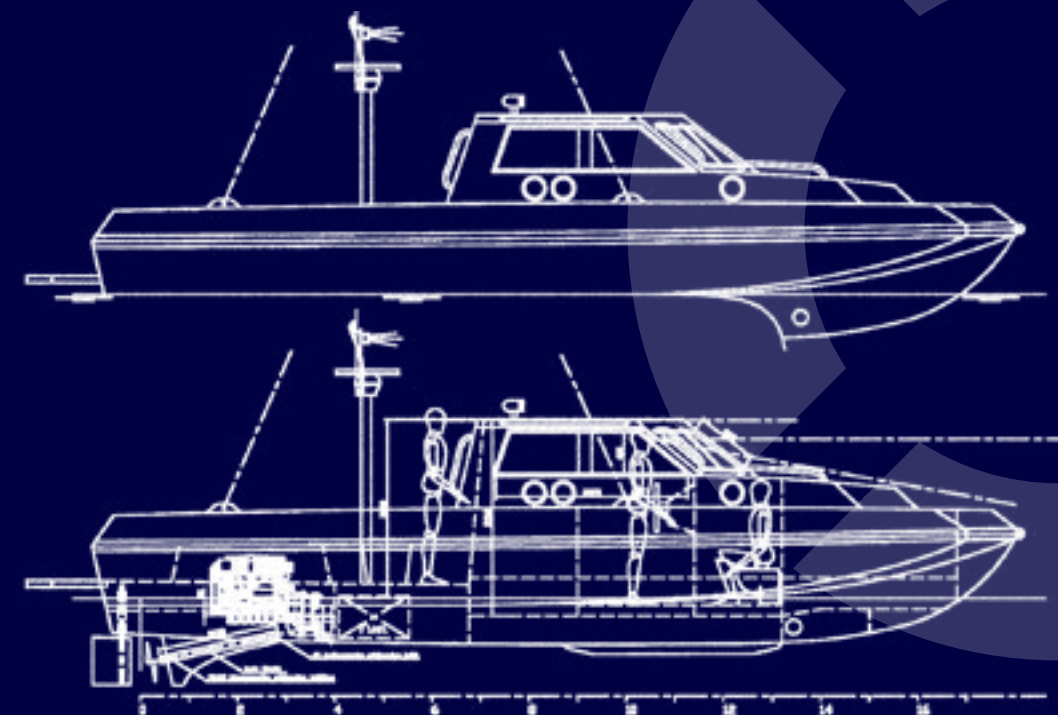
STORMER PATROL SERIES

SPECS



Stormer Patrol is a high speed patrol boat designed for law enforcement, rescue, combat, pollution control, surveillance and personnel transportation services.

The Stormer Patrol Series is made of seawater-resistant aluminium. It is rugged, lightweight and maintenance free. Aluminium is a sustainable building material and it can do without expensive and vulnerable coatings. All parts are digitally cut for a perfect fit and finish. Spray rails and interceptors improve high speed performance. Stormer Patrol is available in lengths from 7 to 12 metres with either diesel or hybrid engines. There is a choice for stern, shaft or jetdrive propulsion. Accommodation is part of the structure and built to client specifications.



STORMER PATROL BOAT 100

Specifications Patrol 100

- Seawater-resistant aluminium 5 mm Code 5083
- Length 10.15 m (o.a.)
- Width 3.00 m
- Air draught 1.86 m
- Draft 0.89 m
- Min. freeboard 0.87 m
- Seating capacity 12 persons
- Hull weight 2150 Kg
- Total weight 3050 kg (appr.)
- CE C (coastal-inland), B prepared
- Engine information Diesel inboard 140 to 350 Hp, Mastervolt Electrical engine or Hybrid
- Speed range 19 to 35 Knots
- Storage bow cabin On request
- Storage stern On request
- Drive line Propeller shaft, V-drive setup
- Fuel capacity To be determined
- Light-moving hull design
- Self-draining hull

- Sleeping accommodation 5 persons
- Toilet and kitchen
- Flush windows
- 4 x Lifting eye

Options

- Cushion set exterior & interior
- Bow thruster
- Hull coating
- Cabriolet cover
- Audio
- Rubber anti-slide floor
- Searchlights
- Extra outdoor steering
- Stern drive
- LoJack Track & Trace
- Neosil antifouling

Standard Equipment

- 140 Hp Diesel inboard V-drive
- 110 mm rubber fender around
- Hydraulic steering on console
- Aluminium tread plate floor





STORMER TUGBOAT SERIES

SPECS



Stormer Tugboats are multipurpose workboats that can be used for many tasks like harbour duties, mooring and pollution control.

The push bow and rubber fender around the hull make the Tugboat a very basic, robust and easy-to-handle boat.

Stormer Tugboats are built with a conventional propeller shaft and powered by naturally aspirated diesels from 28 to 110 hp.

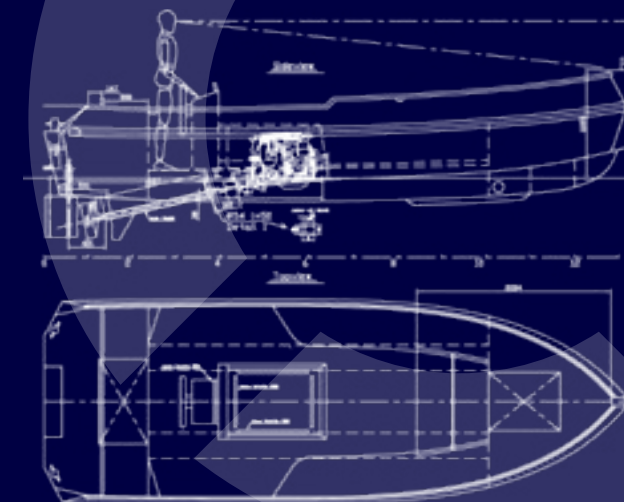
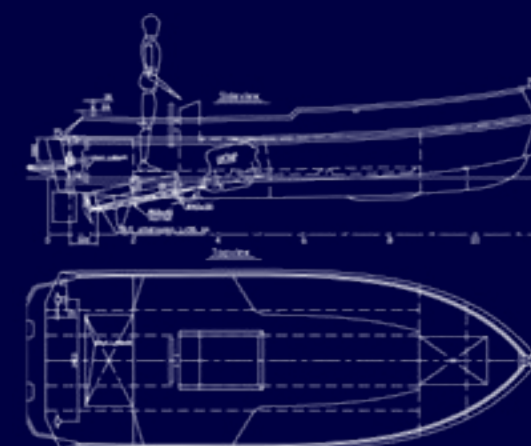
For non-diesel applications it can be powered with single or twin outboard engines.

The fuel tank is easy to remove and clean.

The 28 -52 hp versions are SOLAS compliant.

The Tugboat can be built in different configurations with the console in front or back, with or without side seats, with a towing bitt etc.

Stormer was proud to build the the official tug for the Monaco Port Authority.



STORMER TUGBOAT 60/70

Specifications Tugboat 60

- | | |
|--------------------------------|---------------------|
| • Seawater-resistant aluminium | 4 mm Code 5083 |
| • Overall length | 6.15 m |
| • Width | 2.10 m |
| • Air draught | 1.10 m |
| • Draft | 0.54m |
| • Min freeboard | 0.67 m |
| • Seating capacity | 6 - 8 persons |
| • Hull weight | 550 kg |
| • Dry weight | 850 kg |
| • CE | C (coastal inland) |
| • Storage bow | 0,7 m3 |
| • Storage stern | 0,45 m3 |
| • Hull design | Light-moving |
| • Drainage | Self-draining floor |

Standard equipment

- 110 mm Rubber fender
- Aluminium tread plate floor
- Push bow
- 4 x Lifting eye
- Hydraulic steering

Specifications Tugboat 70

- | | |
|--------------------------------|---------------------|
| • Seawater-resistant aluminium | 5 mm Code 5083 |
| • Overall Length | 7.15 m |
| • Width | 2.45 m |
| • Air draught | 1.25 m |
| • Draft | 0.64 m |
| • Min freeboard | 0.78 m |
| • Seating capacity | 8-10 persons |
| • Hull weight | 850 kg |
| • Dry weight | 1450 kg |
| • CE | C (coastal inland) |
| • Storage bow | 1.0 m3 |
| • Storage stern | 0.8 m3 |
| • Hull design | Light-moving |
| • Drainage | Self-draining floor |

Standard equipment

- 110 mm Rubber fender around
- Aluminium tread plate floor
- Push bow
- 4 x Lifting eye
- Hydraulic steering



STORMER PORTER SERIES

SPECS



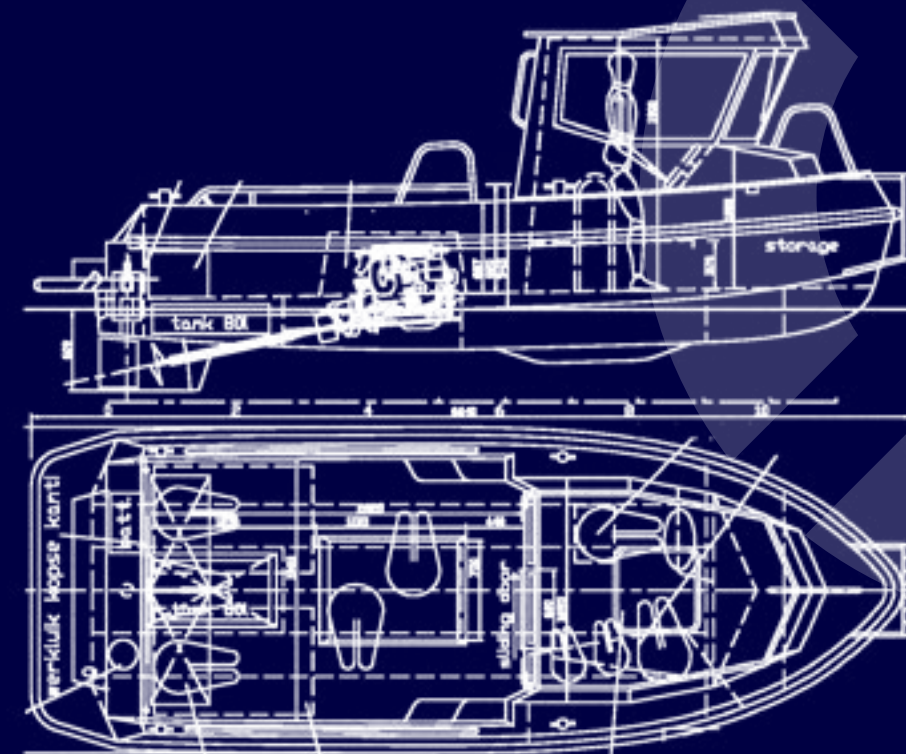
The Stormer Porter was designed as a multi-purpose “pick-up truck on the water”.

It can carry a 1.22 x 2.44 m load while still being light and compact and able to be moved on a trailer. It is available in 6.50 and 7.50 m. versions.

The push bow and rubber fender make the Porter a very robust and easy-to-handle boat. It is built with a conventional propeller shaft and powered by naturally aspirated diesels from 28 to 110 hp.

For non-diesel applications it can be powered with single or twin outboard engines. A hybrid version is also available.

The Porter can be built in different configurations with winches, a towing pole etc.



STORMER PORTER

Specifications Porter 65 Inboard

• Seawater-resistant aluminium	5mm Code 5083
• Overall length	6.65 m
• Width	2.45 m
• Air draught	2.15 m
• Draft	0.60 m
• Min freeboard	0.70 m
• Dry weight	1650 kg

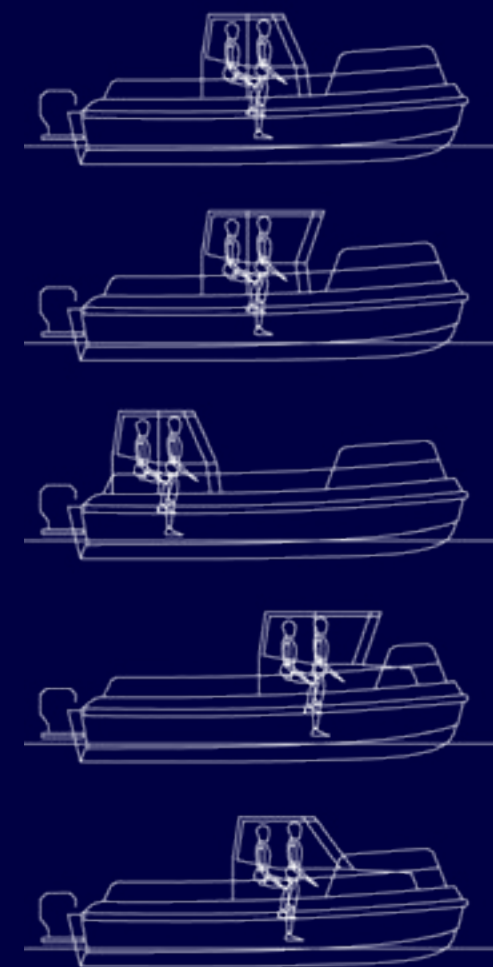
Specifications Porter 75 Outboard

• Seawater-resistant aluminium	5mm Code 5083
• Overall length	7.60 m
• Width	2.45 m
• Air draught	2.15 m
• Draft	0.55 m
• Min freeboard	0.83 m
• Dry weight	2250 kg

• Hull design	Light-moving
• Drainage	Self-draining floor

Standard equipment

- 110 mm Rubber fender
- Aluminium tread plate floor
- Push bow
- 4x Lifting eye
- Hydraulic steering





STORMER TUGBOAT CABIN SERIES

SPECS



The Stormer Tugboats are multipurpose workboats that can be used for many tasks like harbour duties, mooring and pollution control.

The push bow and rubber fender around the hull make the Tugboat a very basic, robust and easy-to-handle boat.

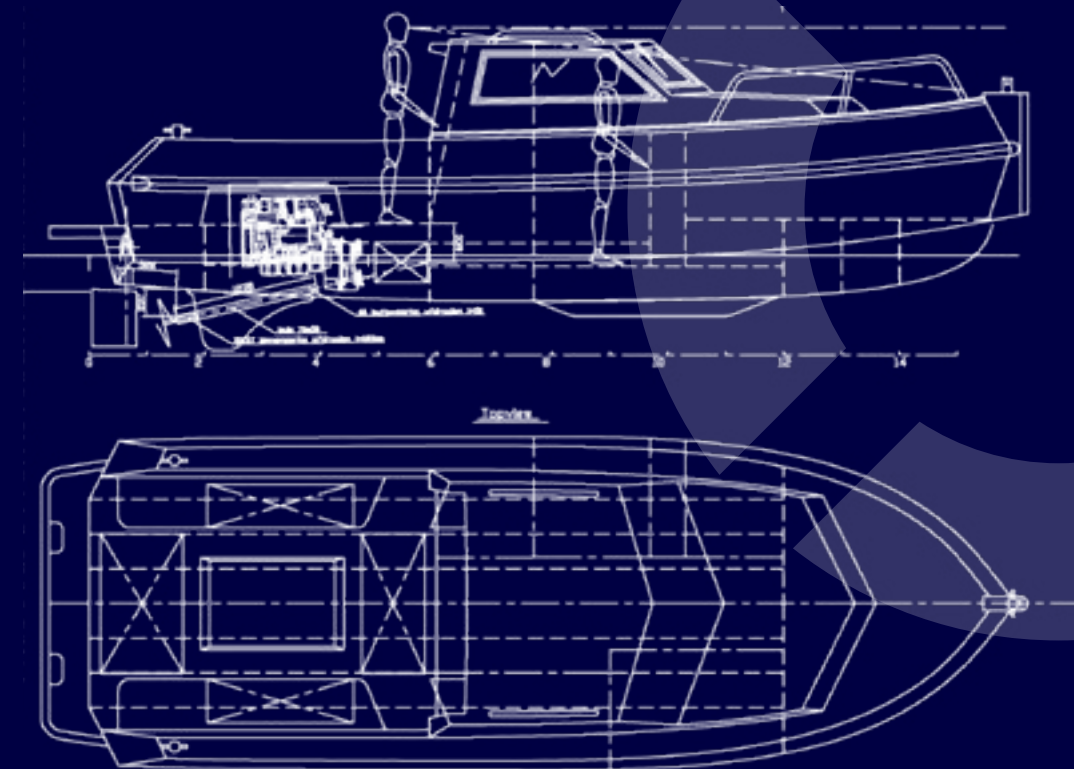
The tugboats are built with a conventional propeller shaft and powered by naturally aspirated diesels from 28 to 110 hp.

For non-diesel applications it can be powered with single or twin outboard engines.

The fuel tank is easy to remove and clean.

The 28 -52 hp versions are SOLAS compliant.

The Tugboat can be built in different configurations with or without side seats, with a towing pole etc.



STORMER TUGBOAT CABIN 85

Specifications Tugboat 85 Cabin

- | | |
|--------------------------------|--|
| • Seawater-resistant aluminium | 5 mm Code 5083 |
| • Length | 8.55 m |
| • Width | 2.95 m |
| • Air draught | 1.87 m |
| • Draft | 0.82 m |
| • Min. freeboard | 0.78 m |
| • Seating capacity | 12 persons |
| • Hull weight | 1450 kg |
| • Total weight | 3050 kg |
| • CE | C (coastal-inland),
B prepared |
| • Engine information | Diesel inboard
42 to 250 Hp
or Electrical
or Hybrid |
| • Speed range | 16 to 31 Knots |
| • Storage bow | Cabin, on request |
| • Storage stern | On request |
| • Drive line | Propeller shaft,
V-drive setup
To be determined |
| • Fuel capacity | |
| • Light-moving hull design | |
| • Self-draining hull | |

Standard Equipment

- 110 mm rubber fender around
- Hydraulic steering on console

- Aluminium tread plate floor
- Sleeping space 3 persons
- Toilet and kitchen
- Push bow
- 4 x Lifting eye

Options

- Mastervolt electrical or hybrid propulsion system
- Cushion set exterior & interior
- Bow thruster
- Coating hull
- Cabriolet cover
- Audio
- Rubber anti-slide floor
- Searchlights
- Extra outdoor steering position
- Stern drive
- LoJack Track & Trace
- Neosil antifouling

Tugboat 85 Cabin Outboard





STORMER RESCUE SERIES

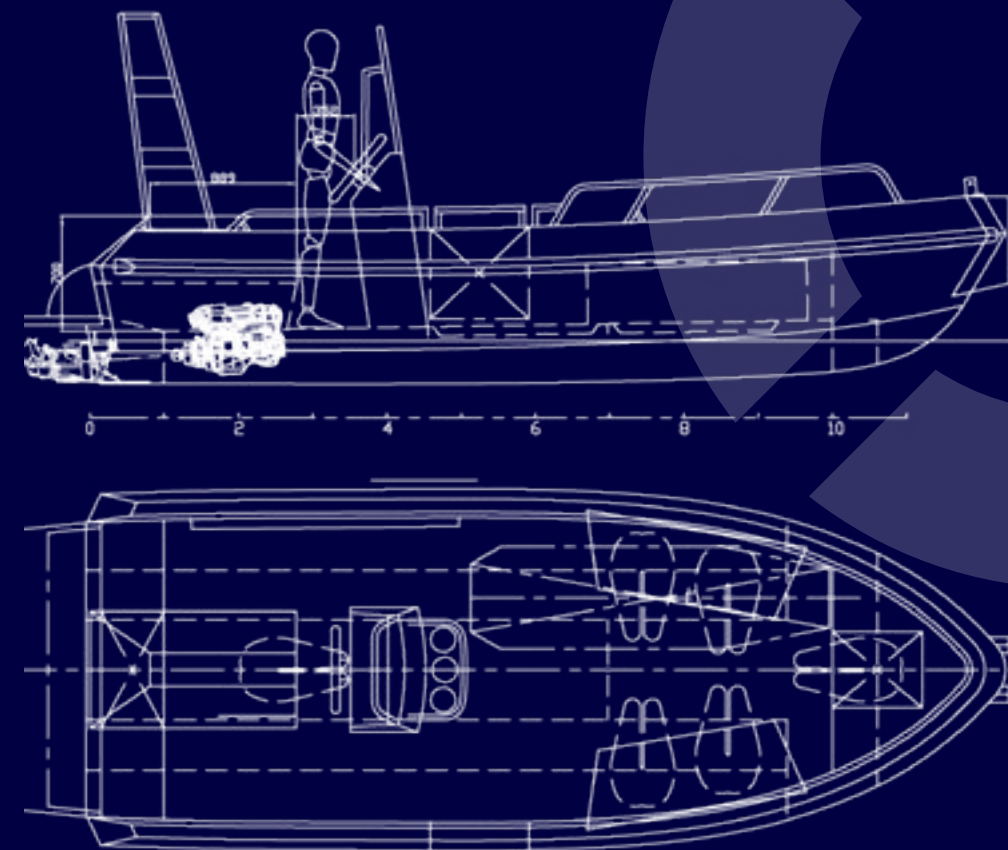
SPECS



The Stormer Rescue is a versatile vessel that can be used for rescue services, diving assistance, coastguard duty, harbour maintenance and as a multipurpose workboat.

Stormer designed the Rescue 65 with a compact jet engine. It is strong, reliable, highly manoeuvrable and trailerable. The compact jet engine is placed under the buddy seat. The seats in the front are removable and can be used as watertight lockers. The side corridor makes it easy to drag a victim into the boat. The open stern allows divers to easily get in and out of the water. The jet engine allows the boat to operate in shallow water and creates a safer work environment for divers.

The standard drive is a 155 hp Weber MPE 850. For non-jet applications the hull can be powered by single or twin outboard engines.



STORMER RESCUE 65

Specifications Inboard version

• Seawater-resistant aluminium	4 mm Code 5083
• Length	6.50 m
• Width	2.30 m
• Air draught	1.05 m
• Draft	0.28 m
• Seating capacity	5 pers.
• Weight incl engine	950 kg
• CE	C (coastal water)
• Engine	Weber 155 hp
• Propulsion	Waterjet
• Drainage	Self-draining
• Rubber fender	110 mm

Main features:

- Radar arch
- Windshield

Outboard version





STORMER RIB SERIES

SPECS



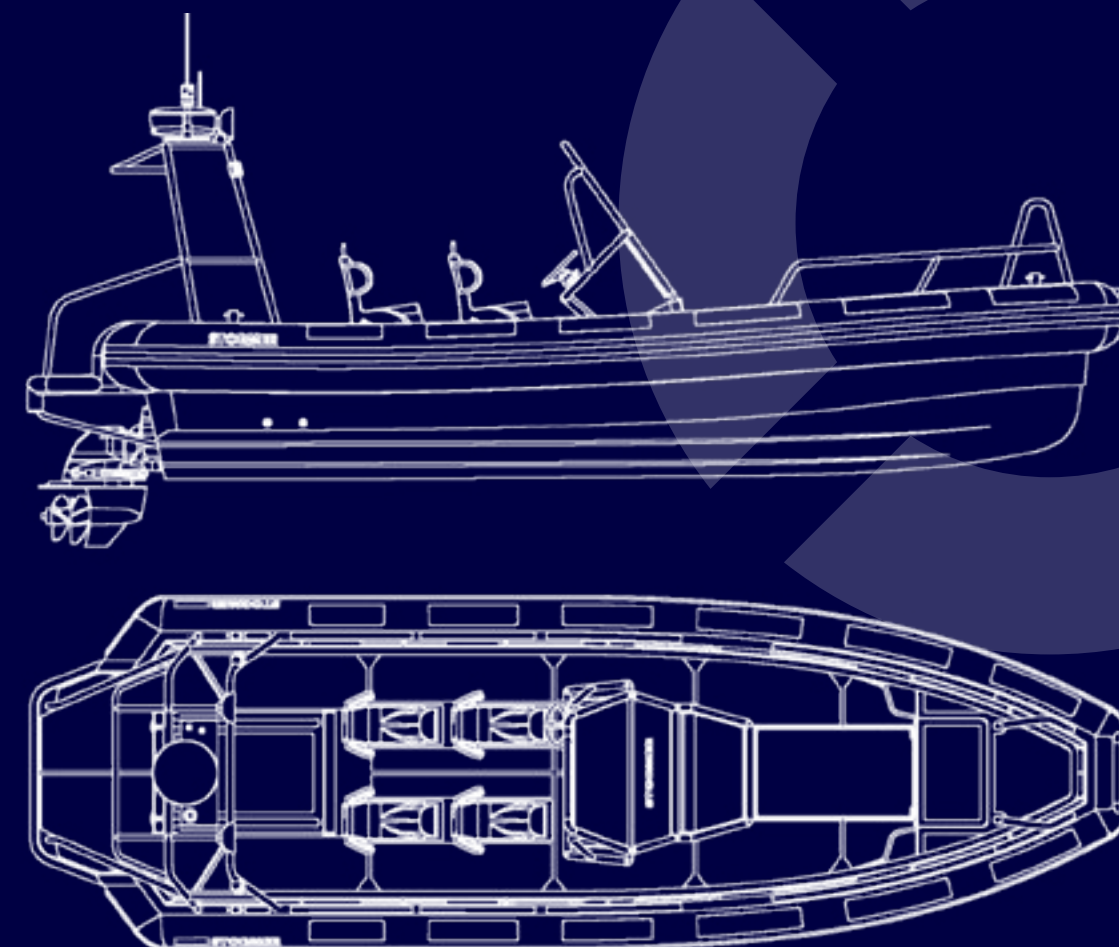
Stormer RIB is the ultimate watercraft that will take you anywhere in any weather.

It is tougher than most of the competition thanks to its rigid aluminium hull. Whether it is used for law enforcement, fire/rescue, commercial or military purposes it will always do the job in a safe way. Thanks to the newly designed axe bow it will do 35 knots in comfort, even in the worst of weather.

The rugged 232 kW/315 mhp Yanmar inboard engine is based on the Toyota Landcruiser 100 engine, which says all about reliability. Propulsion comes from the Mercruiser Bravo sterndrive.

Extra strong rubber fenders are glued to the tubes for extra protection.

Personnel is seated on shock-absorbing seats and protected by the wide steering/navigation console.



STORMER RIB 75

Overall specifications:

- | | |
|--------------------------------|----------------------------------|
| • Seawater-resistant aluminium | 6 mm Code 5083 |
| • Overall length | 7.95 m |
| • Width | 2.50 m |
| • Draft | 0.80 m |
| • Min freeboard | 0.75 m |
| • Seating capacity | 4 + 2 persons |
| • Hull weight | 1530 kg |
| • Dry weight | 2030 kg |
| • CE | B |
| • Storage bow | 1.0 m3 |
| • Hull design | Light-moving |
| • Drainage | Self-draining floor |
| • Engine options | Yanmar 6LPA
232 kW/315 mhp |
| • Driveline | Propeller shaft
or sterndrive |
| • Fuel capacity | To be determined |

Standard equipment:

- Targa bar
- Anti-slide pattern on floor
- 4 x Jockey seats Scotseats
- Rubber protection fender at the back
- 4 x lifting eye

Extra options:

- Fender innovation tube instead of Hypalon
- Search light
- Towing pole
- LoJack Track & Trace
- Raymarine Radar / plotter
- P319 Low Profile Depth/Temp Transducer
- Raystar 130 GPS antenna
- AIS650 Class B Transceiver
- Ray49E VHF Radio EU
- Ray49E/55E/218E Rear Flush Mount Kit
- RD418D 4kW 18" (456mm) Digital Radome
- Maretron Solid State Compass



STORMER

BOATS
AT
WORK

Stormer Marine

Visiting address:
Oostenburgereiland, van Gendthallen
Czaar Peterstraat 213
1018 PL Amsterdam
Netherlands

Mailing address:
P.O.box 2017
NL-1000 CA Amsterdam

Tel.: +31 20 - 693 40 06
e-mail: info@stormermarine.nl

Stormer Service
e-mail: service@stormermarine.nl
Tel.: +31 20 - 693 44 78



Stormer Dealers

Sweden:
Båtbyrå i Långedrag AB
Nya Varvet 85 D
426 71 Västra Frölunda
e-mail: info@batbyran.se
Tel.: +46 736 50 4404

WWW.STORMERMARINE.NL